

An architectural rendering of a modern residential complex. The image features four tall, multi-story apartment buildings with a white and grey facade and prominent red vertical accents. The buildings are set against a clear blue sky with light clouds. In the foreground, there is a paved area with several cars and a few people walking. To the left, a large white geometric structure is partially visible. The overall scene is bright and modern.

**bloom**  
RESIDENCES  
SUCAT, PARAÑAQUE

**PROJECT BRIEFING**

A decorative graphic in the bottom right corner of the page, featuring a close-up of a purple and blue flower with green leaves, rendered in a soft, painterly style.



**SMDC**



**bloom**  
RESIDENCES  
SUCAT, PARAÑAQUE

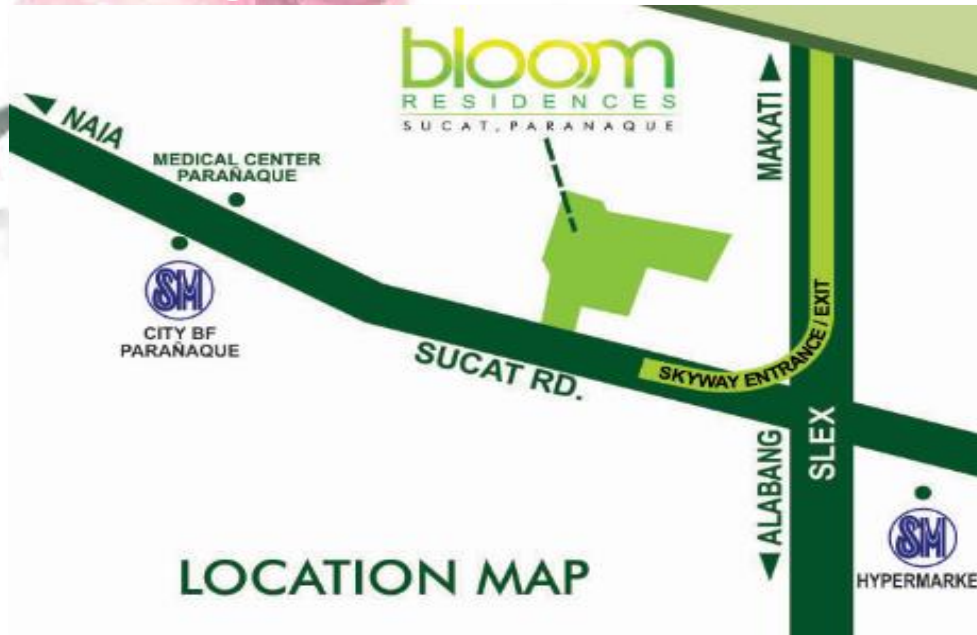
The largest wellness community in the South that is strategically located right at the foot of Skyway-Sucac Exit.

Experience the beginning of a healthy and holistic lifestyle right outside your doorstep. With vast open spaces for sports and recreational facilities, Bloom Residences is a **perfect** community to build a well-rounded foundation for your family.

# PROJECT OVERVIEW

*Pre-selling*

**bloom**  
RESIDENCES  
SUCAT, PARAÑAQUE



- Along Dr. A. Santos Avenue, Sucat Parañaque
- Approximately 100 meters from the Sucat Exit Skyway Ramp
- Accessible by 4 major business districts (MOA, Makati, BGC and Alabang).
- Airport through NAIA Express (7.2kms).
- Surrounded by commercial areas and health institutions.



# LOCATION

## *Prime Location*

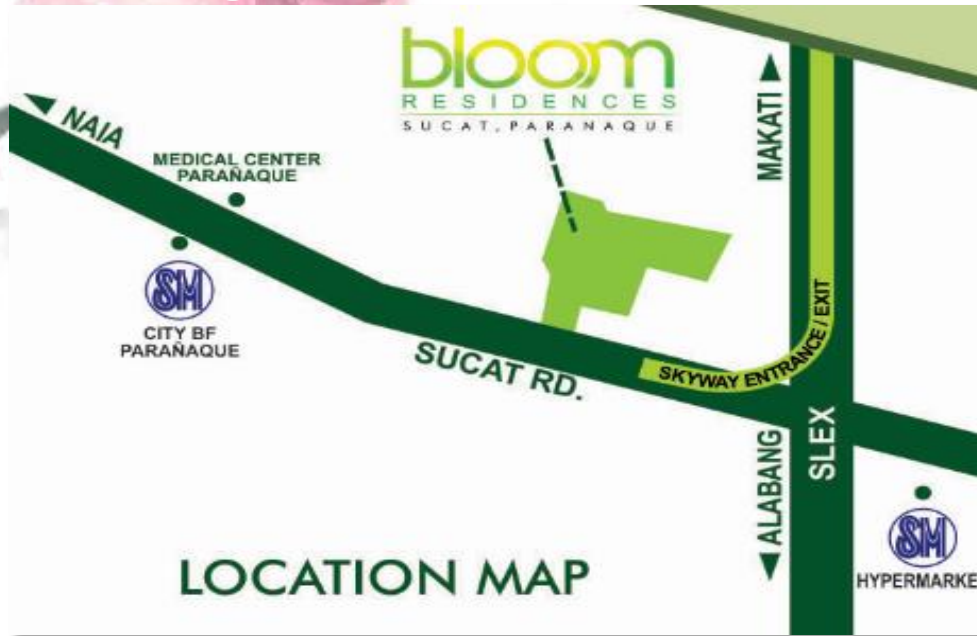
**bloom**  
RESIDENCES  
SUCAT, PARAÑAQUE

- Along Dr. A. Santos Avenue, Sucat Parañaque
- Approximately 100 meters from the Sucat Exit Skyway Ramp
- Accessible by 4 major business districts (MOA, Makati, BGC and Alabang).
- Airport through NAIA Express (7.2kms).
- Surrounded by commercial areas and health institutions.



# PROJECT OVERVIEW

*Pre-selling*



## ✓ Business Districts

- MOA (10.5 km)
- Makati (10.5 km)
- Bonifacio Global City (9.0 km)
- Alabang CBD (3.8 km)

## ✓ Commercial Areas

- SM City BF (1.2 km)
- SM City Sucat (6.6 km)
- SM Hypermarket (1.0 km)
- Shopwise (0.75 km)
- Puregold (4.2 km)
- Santana Grove (0.65 km)

## ✓ Health Institutions

- Medical Center Parañaque (0.7 km)
- Asian Hospital and Medical Center (4.7 km)

## ✓ NAIA Aiport through NAIA Express (7.2 km)



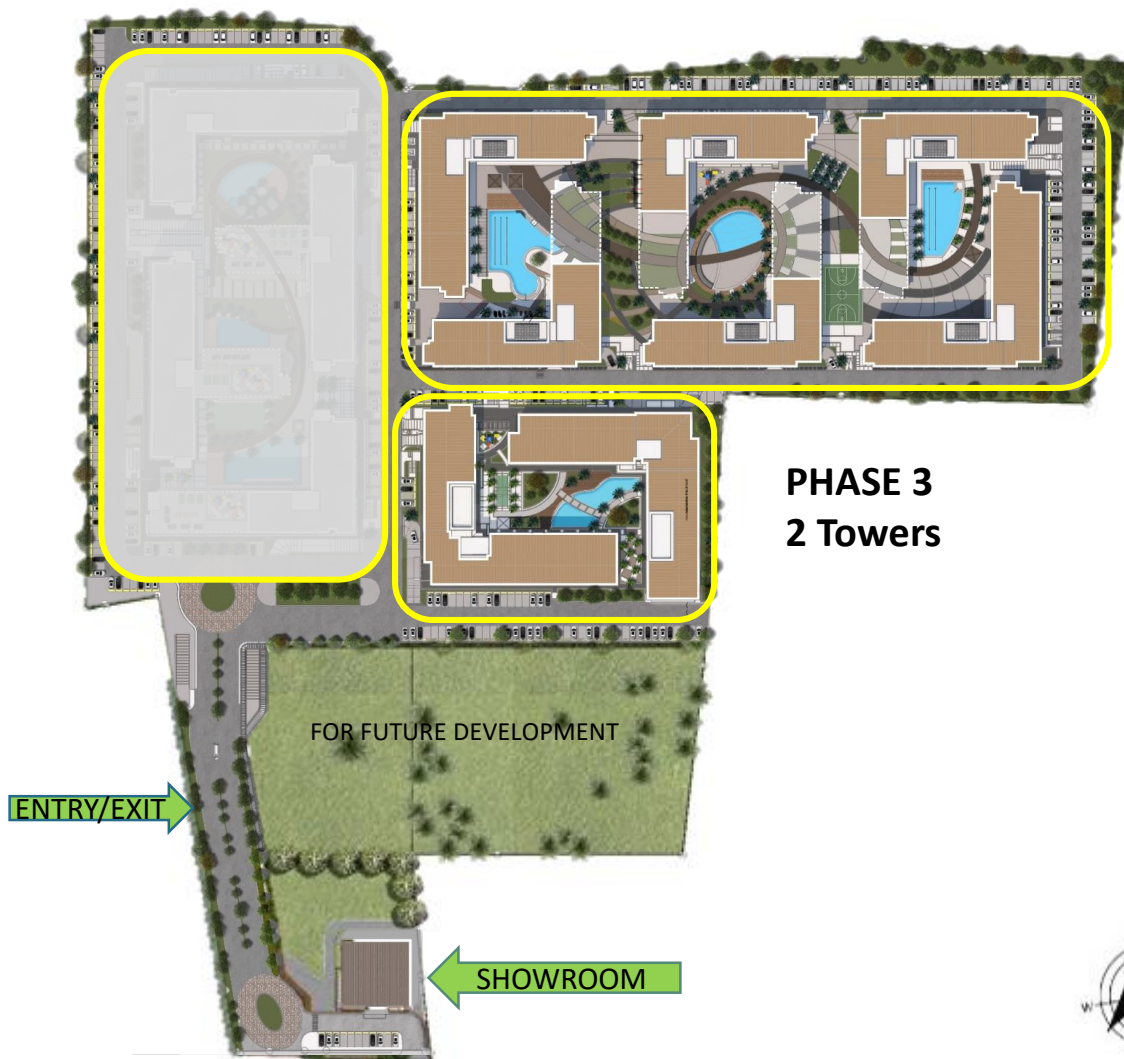
# SITE DEVELOPMENT PLAN

*"365 Days of Family Wellness"*

**PHASE 2**  
**4 Towers**

**PHASE 1**  
**6 Towers**

**PHASE 3**  
**2 Towers**



FOR FUTURE DEVELOPMENT

ENTRY/EXIT

SHOWROOM



Dr. A. Santos Road

# VIEWS

North of Bloom Residences  
- Makati City | Mall Of Asia CBD



North West of Bloom Residences  
- Entertainment City



West of Bloom Residences  
- SM City BF Parañaque



South of Bloom Residences  
- Alabang Area

**bloom**  
RESIDENCES  
SUCAT, PARAÑAQUE

North East of Bloom Residences  
- BGC

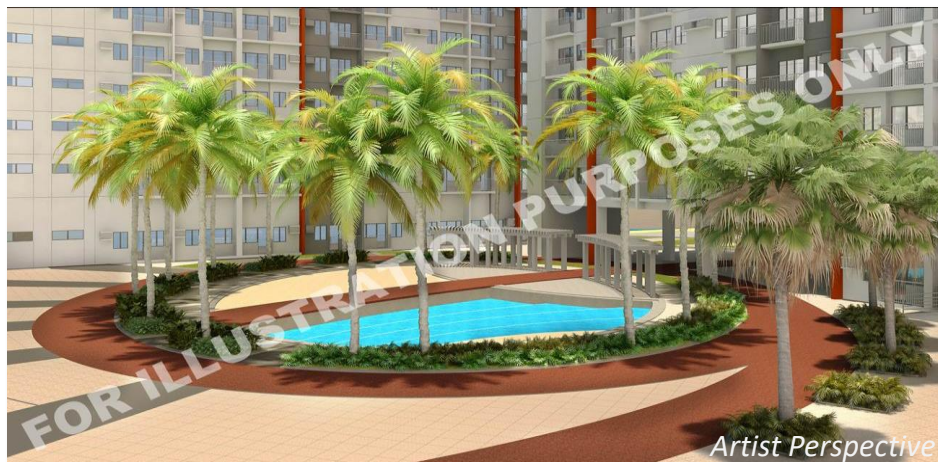


East of Bloom Residences  
- SLEX  
- Laguna de Bay





# PROJECT DETAILS



Architectural Theme	Modern Contemporary
Total Land Area	6.1 hectares
No. of Towers/Buildings	<b>Phase 1 - 6 Towers (3,303 units)</b> Tower A – 563 units Tower B – 545 units Tower C – 548 units Tower D – 537 units Tower E – 557 units <b>Phase 3 – 2 Towers (1,143 units)</b> Tower L – 565 units Tower M – 578 units
No. of Floors/Tower	15 Residential Floors
Number of Units Per Floor	+/-38 units per floor
Total Number of Parking Slots	Ph 1 - 843 parking slots Ph 3 – 342 parking slots (Basement and GF)
Unit Types	2 BR W/ BALCONY 2BR END UNIT W/ BALCONY 2 BR W/ MEZZANINE AND BALC 2 BR W/ MEZZANINE 2 BR END W/ MEZZ AND BALCONY 2 BR END W/ MEZZANINE
Launch Date	October 2017 (Phase 1) July 2020 (Phase 3)
Turnover Date	Phase 1 – Tower A and B – RFO - Tower C & Tower D – Q4 2024; Tower E and F – Q3 2025 Phase 3 – Q3 2026

# BUILDING CHART



Artist Perspective

# BUILDING FEATURES

- ✓ 24-hour security services
- ✓ High speed elevators
- ✓ Grand lobbies
- ✓ Back-up power system
- ✓ Fire alarm and sprinkler system
- ✓ Centralized mailroom
- ✓ Centralized garbage collection and disposal system
- ✓ Property Management
- ✓ Prime Key Leasing Services

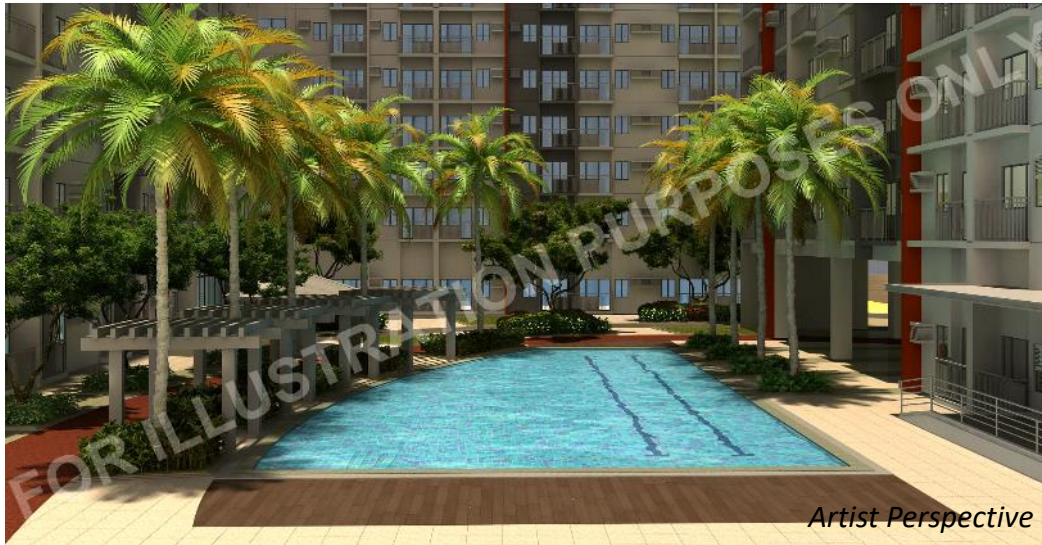


# AMENITIES

*A home that you can be truly proud of*



- ✓ Swimming Pools
- ✓ Water play area
- ✓ Grand Lobbies
- ✓ Multi-purpose Rooms
- ✓ Basketball Court
- ✓ Jogging Path
- ✓ Lounge Deck
- ✓ Playground
- ✓ Lawn Area



# PROPOSED LANDSCAPE PLAN

Artist Perspective



Phase 1 Amenity

- Promotes active and healthy lifestyle
- Safe, Secure and generous open spaces

# AMENITY PLAN – PHASE 1



## LEGENDS

### PHASE 1

- |               |                   |                       |                          |
|---------------|-------------------|-----------------------|--------------------------|
| ① ADULT POOL  | ⑤ WOOD DECK       | ⑩ PALM COURT          | ⑮ FEATURE TREE           |
| ② LAP POOL    | ⑥ POOL DECK       | ⑪ JOG PATH            | ⑯ PAVED AREA WITH LOUNGE |
| ③ KIDDIE POOL | ⑦ PLANTING AREA   | ⑫ TRELLIS             | ⑰ OPEN TO BELOW          |
| ④ WATER PLAY  | ⑧ ARTIFICIAL TURF | ⑬ GAZEBO              |                          |
|               | ⑨ SUNKET SEAT     | ⑭ CHILDRENS PLAY AREA |                          |



# AMENITY PLAN – PHASE 3



### KEY PLAN:



### LEGEND

- 1 ADULT POOL
- 2 KIDDIE POOL
- 3 POOL DECK
- 4 ARTIFICIAL TURF
- 5 TREE COURT
- 6 WALKWAY / JOGPATH
- 7 CHILDRENS PLAY AREA
- 8 MULTI PURPOSE COURT

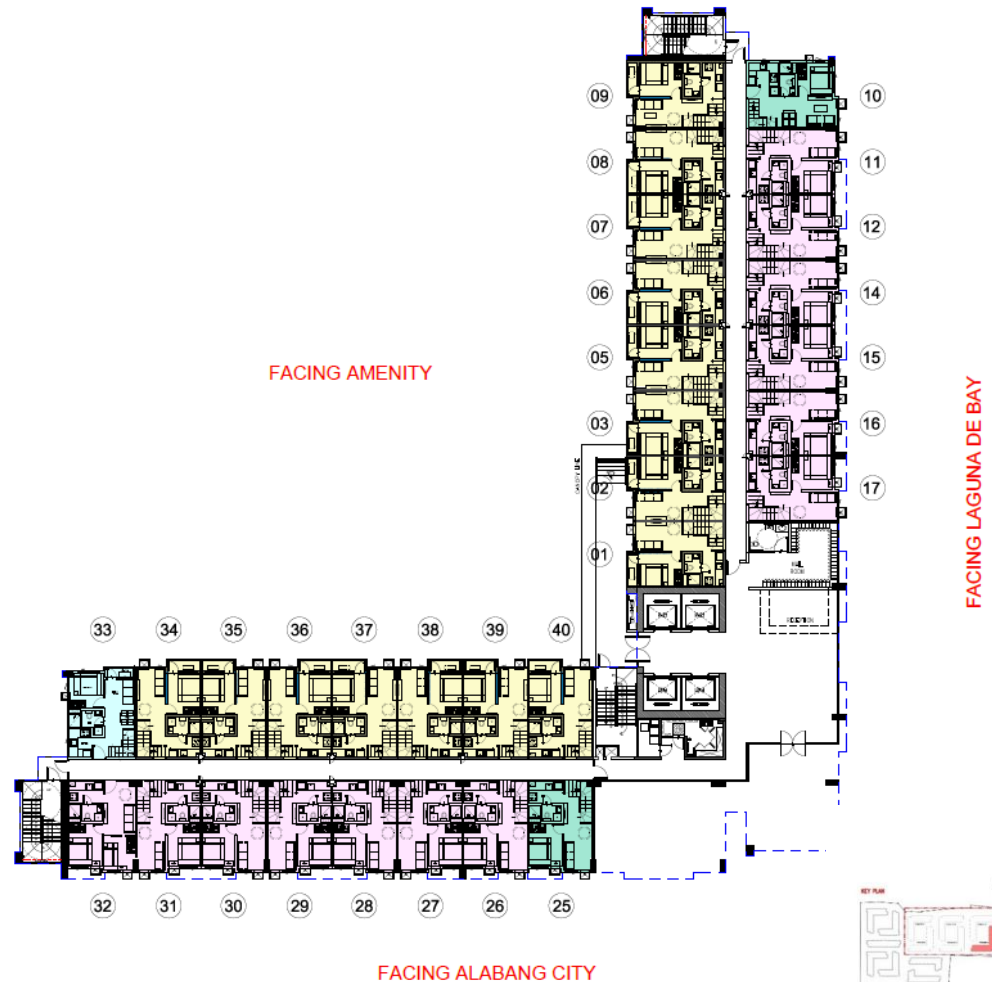
\*FOR MARKETING REFERENCE



# TYPICAL FLOOR PLAN

## TOWER A

UNIT TYPE	NO. OF UNITS
2BR END UNIT w/ MEZ & BALCONY	1
2BR END UNIT w/ MEZZANINE	2
2BR w/ MEZZANINE	13
2BR w/ MEZZANINE & BALCONY	15



**LEGENDS:**

**2-BEDROOM UNIT W/ MEZZANINE & BALCONY**

- 2 BEDROOM UNIT W/ MEZZANINE & BALCONY
- 2 BEDROOM END UNIT W/ MEZZANINE & BALCONY

**2-BEDROOM UNIT W/ MEZZANINE**

- 2 BEDROOM UNIT W/ MEZZANINE
- 2 BEDROOM END UNIT W/ MEZZANINE

**TOWER A**

**GROUND FLOOR PLAN**

SCALE NOT TO SCALE

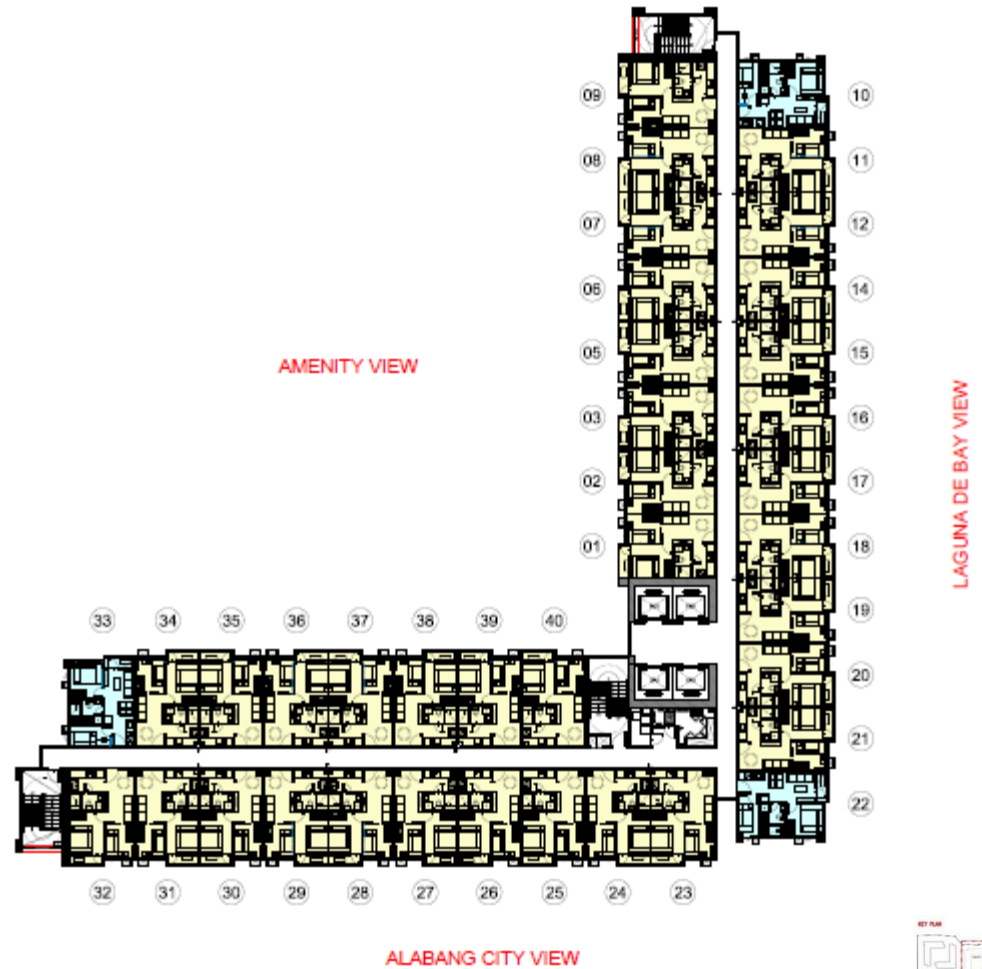


# TYPICAL FLOOR PLAN



## TOWER A

UNIT TYPE	NO. OF UNITS
2 - Bedroom End Unit w/ Balcony	43
2 - Bedroom Unit w/ Balcony	505



### LEGENDS:

#### 2-BEDROOM UNIT W/ BALCONY

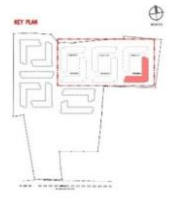
- 2 BEDROOM UNIT W/ BALCONY
- 2 BEDROOM END UNIT W/ BALCONY

### TOWER A

3RD - 15TH TYPICAL FLOOR PLAN

SCALE

NOT TO SCALE



# TYPICAL FLOOR PLAN

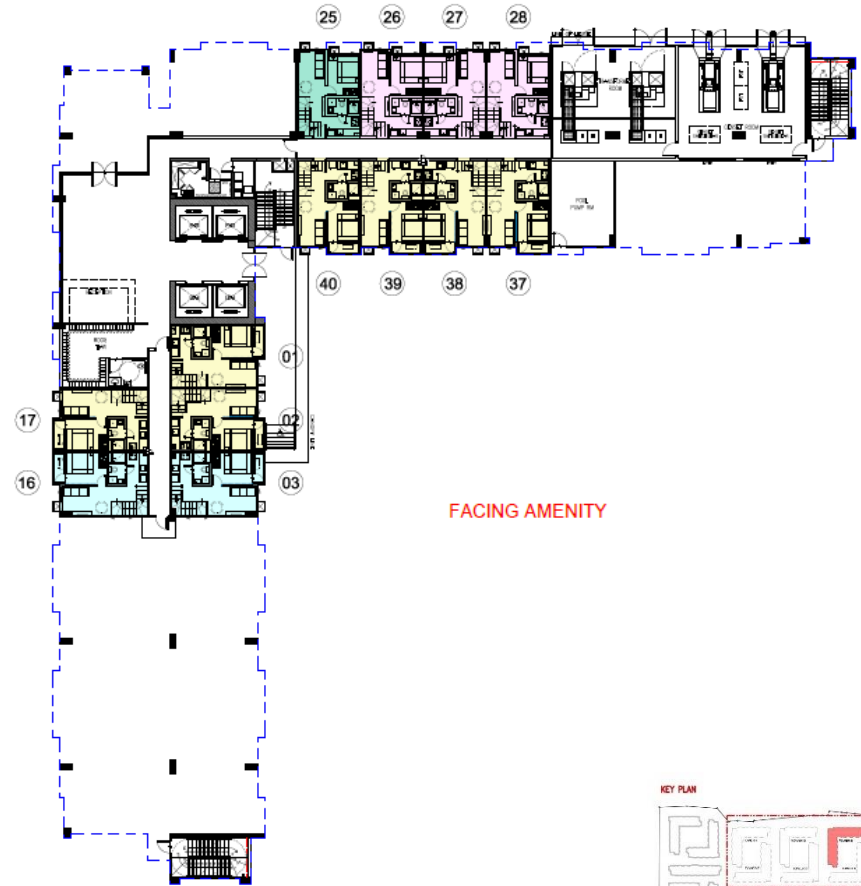


## TOWER B

UNIT TYPE	NO. OF UNITS
2BR END UNIT w/ MEZ & BALCONY	2
2BR END UNIT w/ MEZZANINE	1
2BR w/ MEZZANINE	3
2BR w/ MEZZANINE & BALCONY	7

FACING MAKATIC CITY / MALL OF ASIA CBD

FACING AMENITY



FACING AMENITY

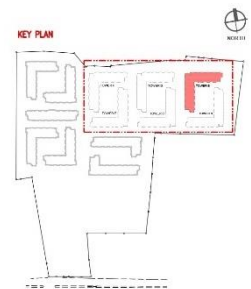
LEGENDS:

2-BEDROOM UNIT W/ MEZZANINE & BALCONY

- 2 BEDROOM UNIT W/ MEZZANINE & BALCONY
- 2 BEDROOM END UNIT W/ MEZZANINE & BALCONY

2-BEDROOM UNIT W/ MEZZANINE

- 2 BEDROOM UNIT W/ MEZZANINE
- 2 BEDROOM END UNIT W/ MEZZANINE



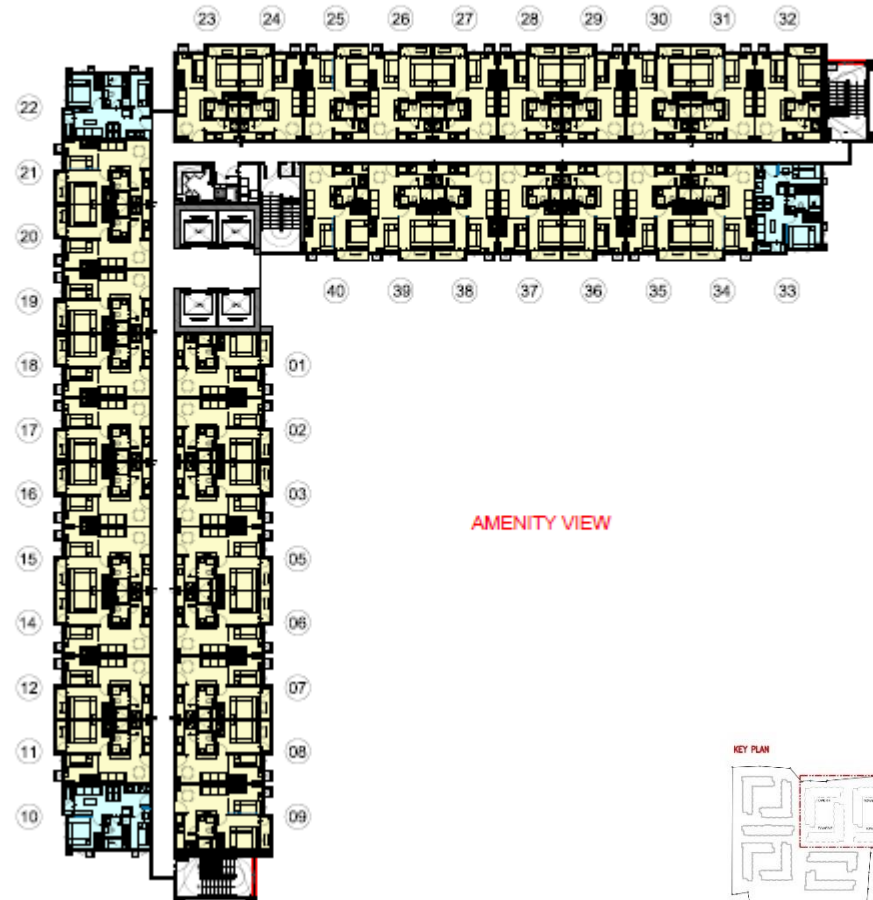
# TYPICAL FLOOR PLAN

## TOWER B

UNIT TYPE	NO. OF UNITS
2 Bedroom End Unit w/ Balcony	44
2 Bedroom Unit w/ Balcony	497



MAKATI CITY / MALL OF ASIA CBD VIEW



AMENITY VIEW

### LEGENDS:

#### 2-BEDROOM UNIT W/ BALCONY

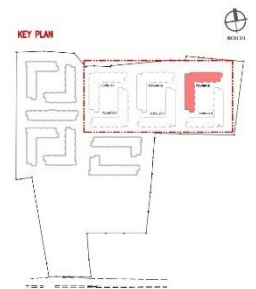
- 2 BEDROOM UNIT W/ BALCONY
- 2 BEDROOM END UNIT W/ BALCONY

## TOWER A

3RD - 15TH TYPICAL FLOOR PLAN

SCALE

NOT TO SCALE



# TYPICAL FLOOR PLAN



## TOWER C

UNIT TYPE	NO. OF UNITS
2BR END UNIT w/ MEZ & BALCONY	1
2BR END UNIT w/ MEZZANINE	1
2BR w/ MEZZANINE	7
2BR w/ MEZZANINE & BALCONY	7

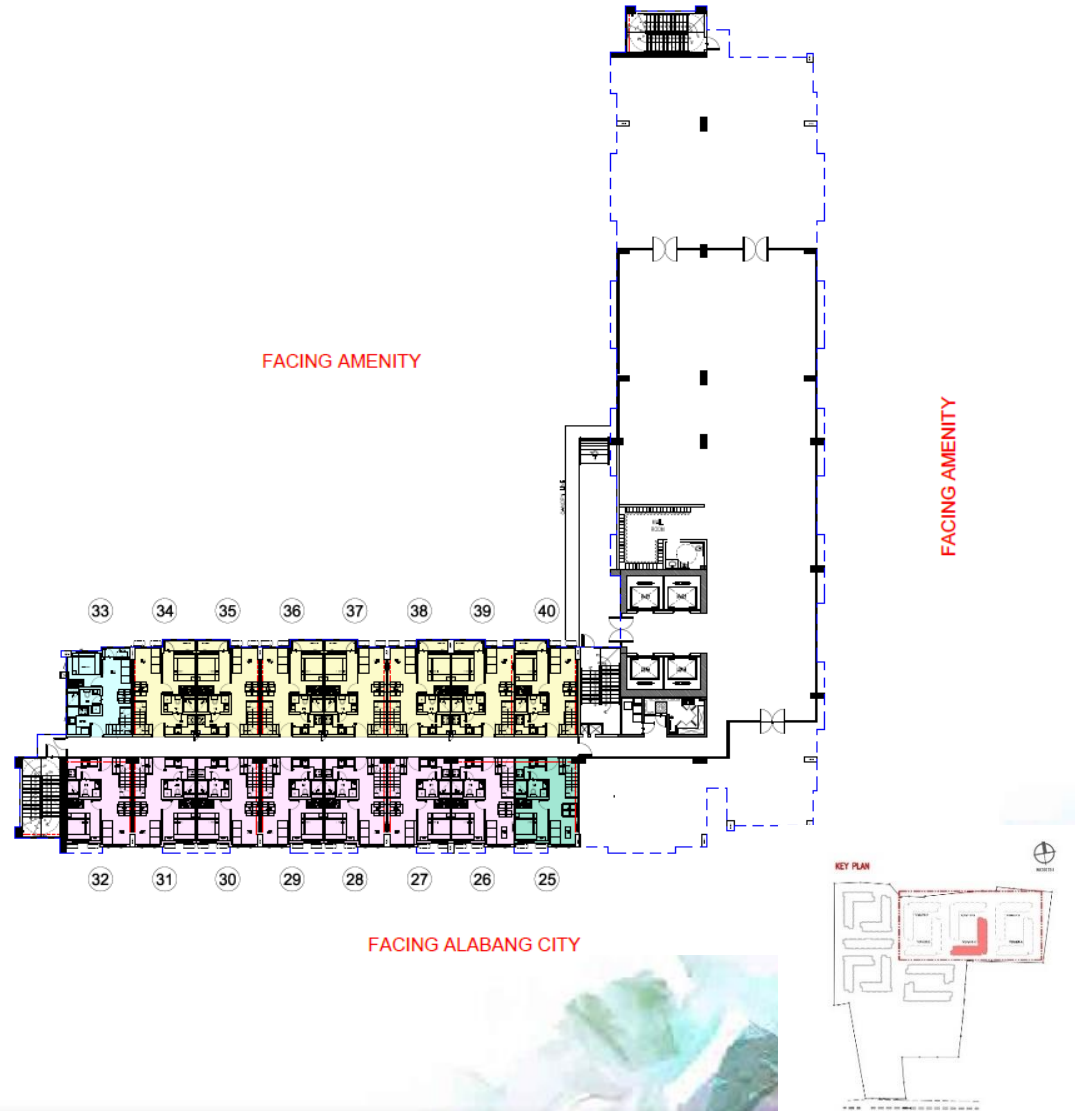
LEGENDS:

2-BEDROOM UNIT W/ MEZZANINE & BALCONY

- 2 BEDROOM UNIT W/ MEZZANINE & BALCONY
- 2 BEDROOM END UNIT W/ MEZZANINE & BALCONY

2-BEDROOM UNIT W/ MEZZANINE

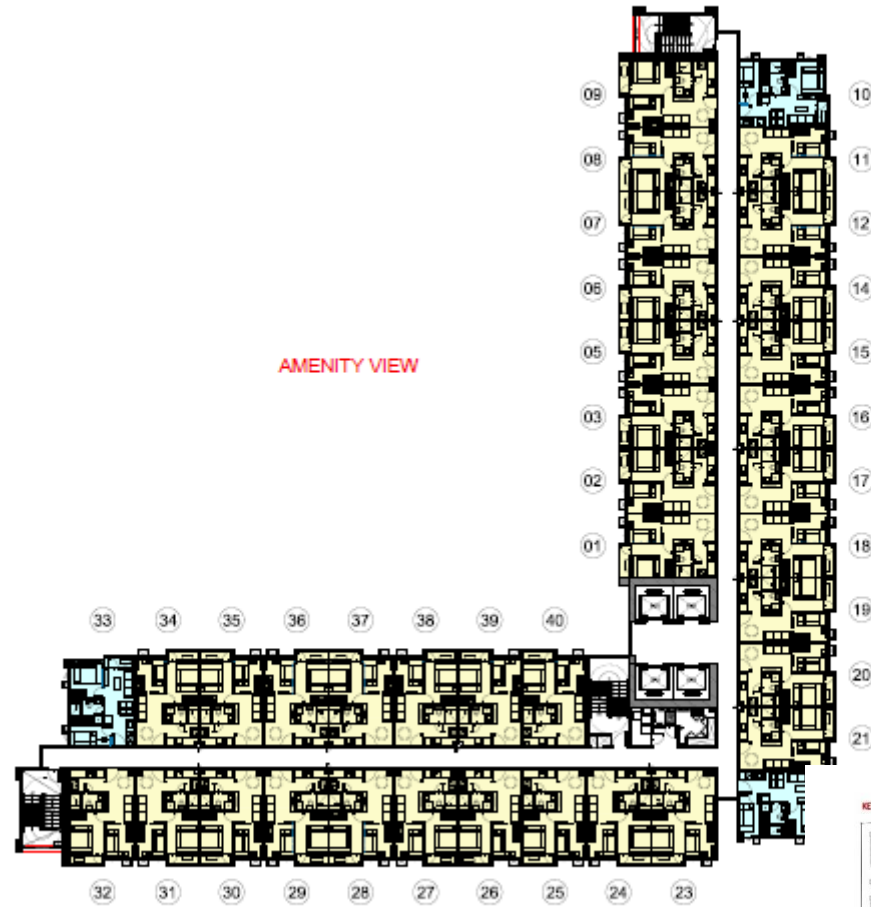
- 2 BEDROOM UNIT W/ MEZZANINE
- 2 BEDROOM END UNIT W/ MEZZANINE



# TYPICAL FLOOR PLAN

## TOWER C

UNIT TYPE	NO. OF UNITS
2 - Bedroom End Unit w/ Balcony	43
2 - Bedroom Unit w/ Balcony	497



AMENITY VIEW

AMENITY VIEW

ALABANG CITY VIEW

### LEGENDS:

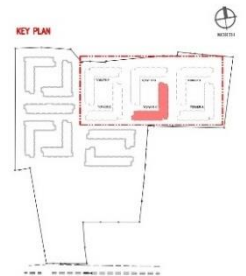
#### 2-BEDROOM UNIT W/ BALCONY

- 2 BEDROOM UNIT W/ BALCONY
- 2 BEDROOM END UNIT W/ BALCONY

### TOWER A

3RD - 15TH TYPICAL FLOOR PLAN

SCALE NOT TO SCALE



# TYPICAL FLOOR PLAN



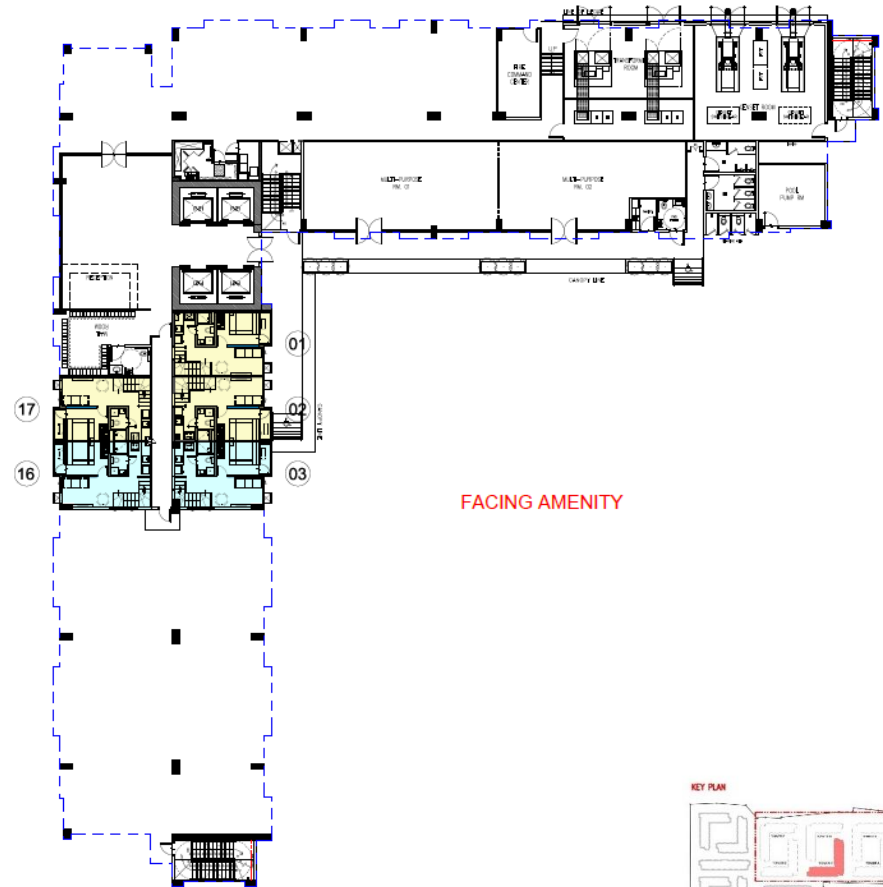
## TOWER D

UNIT TYPE	NO. OF UNITS
2BR END UNIT w/ MEZ & BALCONY	2
2BR w/ MEZZANINE & BALCONY	3

FACING MAKATIC CITY / MALL OF ASIA CBD

FACING AMENITY

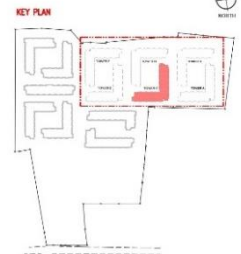
FACING AMENITY



LEGENDS:

2-BEDROOM UNIT W/ MEZZANINE & BALCONY

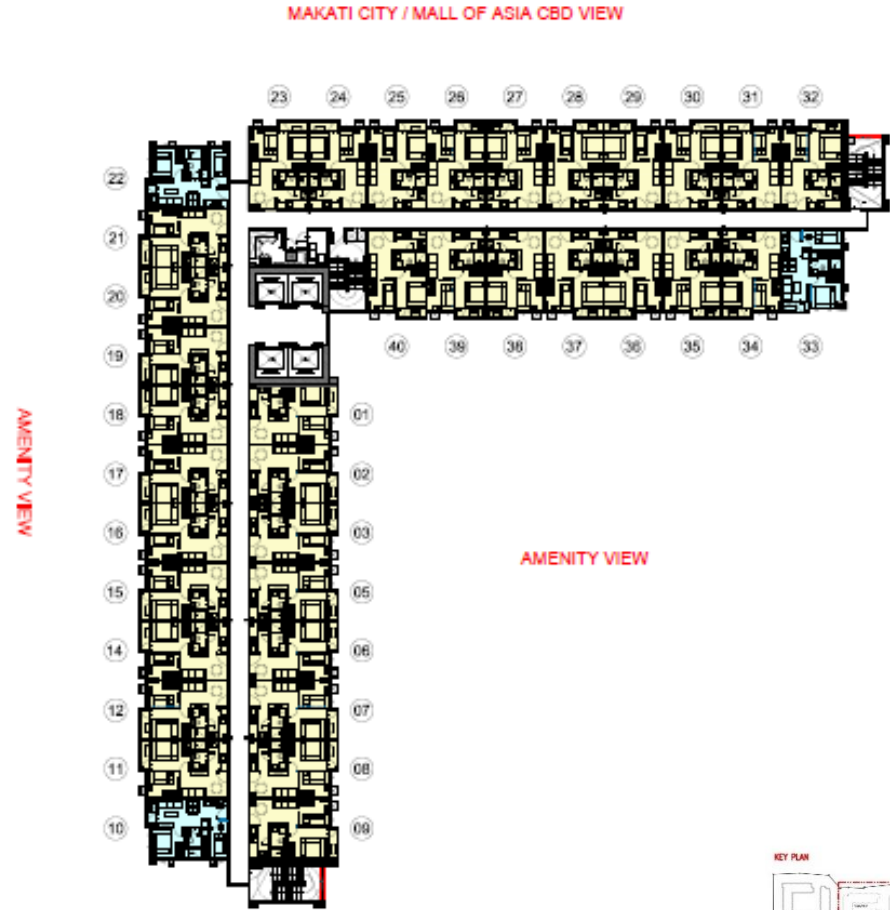
- 2 BEDROOM UNIT W/ MEZZANINE & BALCONY
- 2 BEDROOM END UNIT W/ MEZZANINE & BALCONY



# TYPICAL FLOOR PLAN

## TOWER D

UNIT TYPE	NO. OF UNITS
2 - Bedroom End Unit w/ Balcony	44
2 - Bedroom Unit w/ Balcony	493



### LEGENDS:

#### 2-BEDROOM UNIT W/ BALCONY

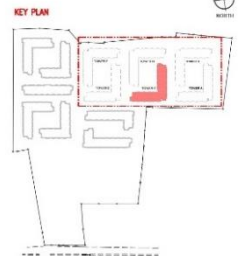
- 2 BEDROOM UNIT W/ BALCONY
- 2 BEDROOM END UNIT W/ BALCONY

## TOWER A

### 3RD - 15TH TYPICAL FLOOR PLAN

SCALE

NOT TO SCALE



# TYPICAL FLOOR PLAN



## TOWER E

UNIT TYPE	NO. OF UNITS
2BR END UNIT w/ MEZ & BALCONY	3
2BR END UNIT w/ MEZZANINE	1
2BR w/ MEZZANINE	7
2BR w/ MEZZANINE & BALCONY	10

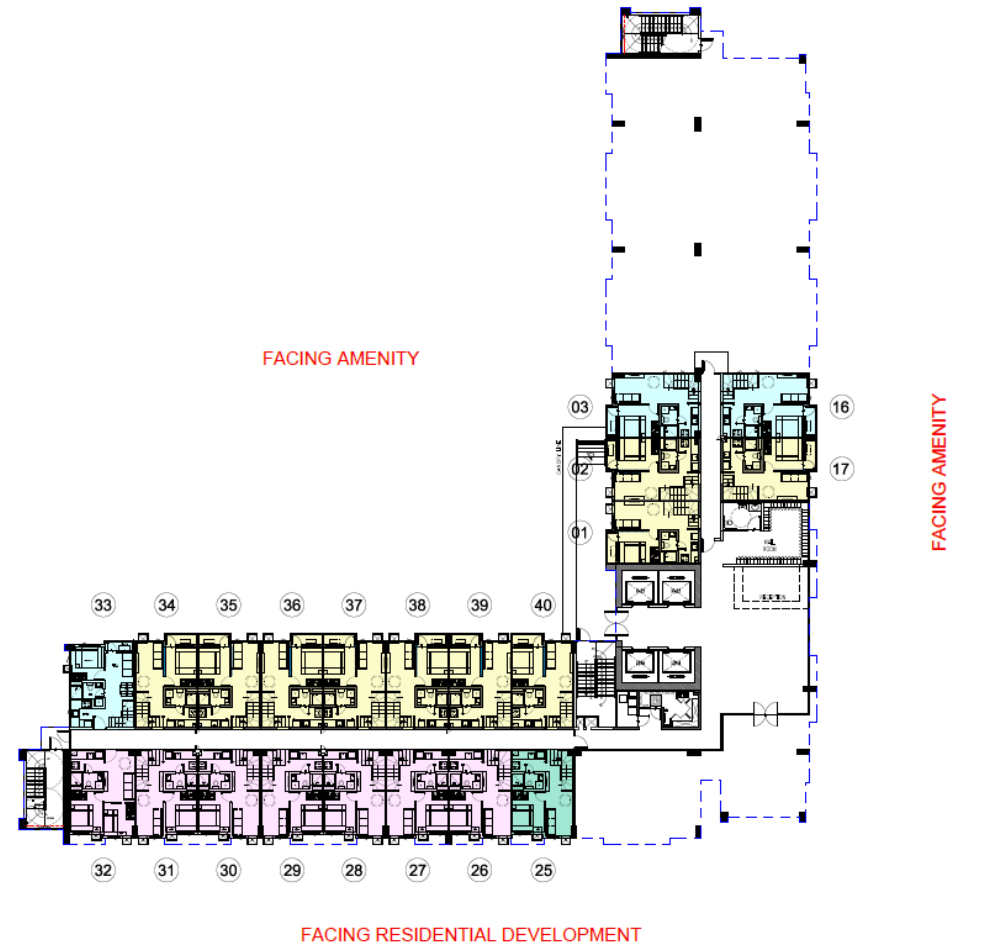
LEGENDS:

2-BEDROOM UNIT W/ MEZZANINE & BALCONY

- 2 BEDROOM UNIT W/ MEZZANINE & BALCONY
- 2 BEDROOM END UNIT W/ MEZZANINE & BALCONY

2-BEDROOM UNIT W/ MEZZANINE

- 2 BEDROOM UNIT W/ MEZZANINE
- 2 BEDROOM END UNIT W/ MEZZANINE



TOWER E

GROUND FLOOR PLAN

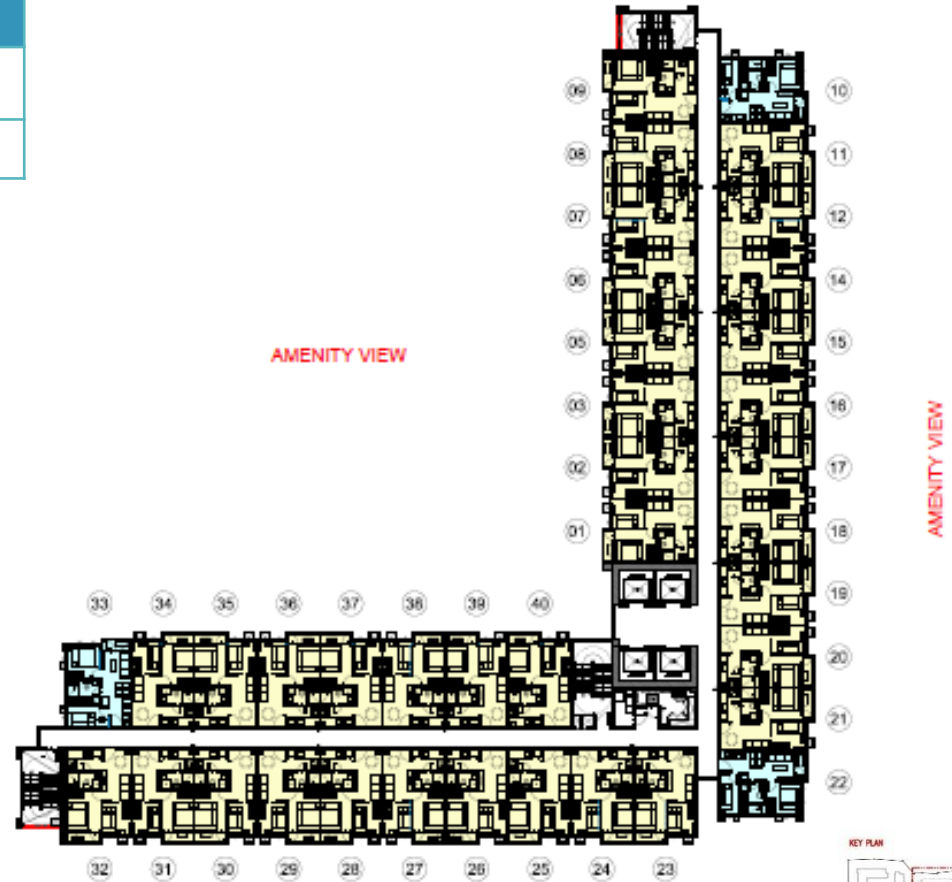
SCALE NOT TO SCALE



# TYPICAL FLOOR PLAN

## TOWER E

UNIT TYPE	NO. OF UNITS	AVE. UNIT AREA (sqm)
2 - Bedroom End Unit w/ Balcony	45	31.96
2 - Bedroom Unit w/ Balcony	500	32.51



### LEGENDS:

#### 2-BEDROOM UNIT W/ BALCONY

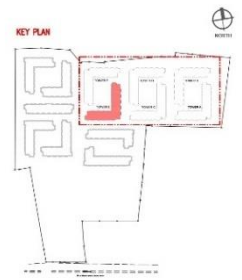
- 2 BEDROOM UNIT W/ BALCONY
- 2 BEDROOM END UNIT W/ BALCONY

## TOWER A

3RD - 15TH TYPICAL FLOOR PLAN

SCALE

NOT TO SCALE



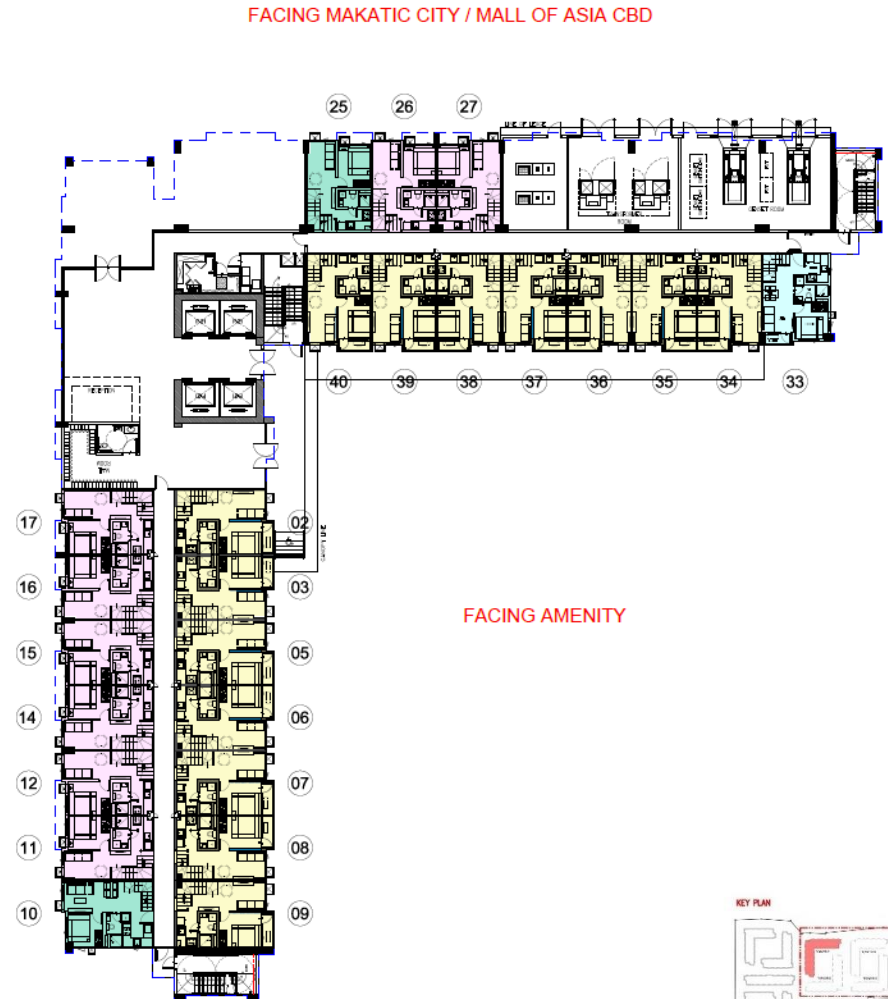
# TYPICAL FLOOR PLAN



## TOWER F

UNIT TYPE	NO. OF UNITS
2BR END UNIT w/ MEZ & BALCONY	1
2BR END UNIT w/ MEZZANINE	2
2BR w/ MEZZANINE	8
2BR w/ MEZZANINE & BALCONY	14

FACING RESIDENTIAL DEVELOPMENT



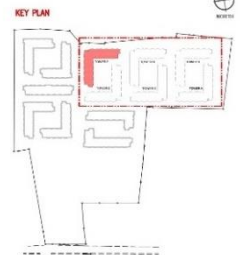
**LEGENDS:**

**2-BEDROOM UNIT W/ MEZZANINE & BALCONY**

- 2 BEDROOM UNIT W/ MEZZANINE & BALCONY
- 2 BEDROOM END UNIT W/ MEZZANINE & BALCONY

**2-BEDROOM UNIT W/ MEZZANINE**

- 2 BEDROOM UNIT W/ MEZZANINE
- 2 BEDROOM END UNIT W/ MEZZANINE



# TYPICAL FLOOR PLAN

## TOWER F

UNIT TYPE	NO. OF UNITS
2 - Bedroom End Unit w/ Balcony	43
2 - Bedroom Unit w/ Balcony	504

### LEGENDS:

#### 2-BEDROOM UNIT W/ BALCONY

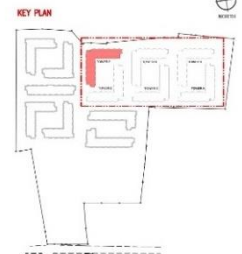
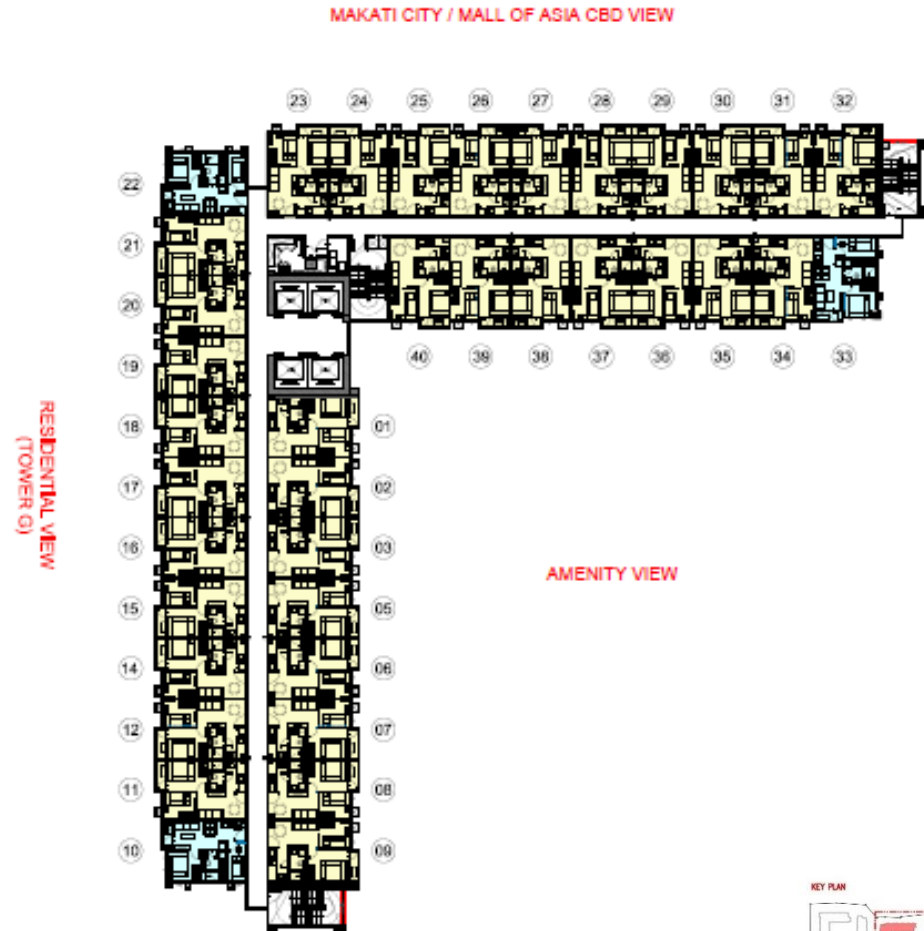
- 2 BEDROOM UNIT W/ BALCONY
- 2 BEDROOM END UNIT W/ BALCONY

### TOWER A

3RD - 15TH TYPICAL FLOOR PLAN

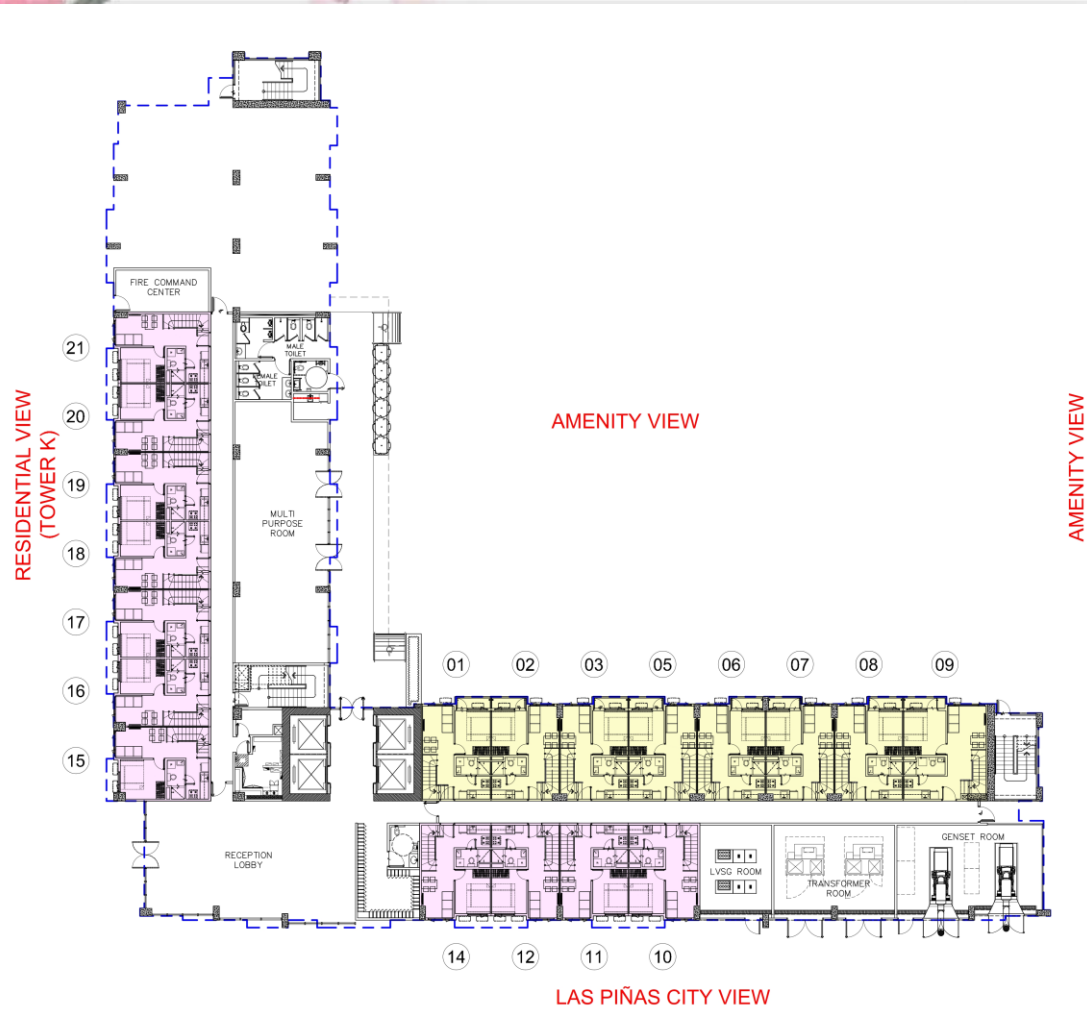
SCALE

NOT TO SCALE



# GROUND FLOOR PLAN

## TOWER L



**LEGENDS:**

**2-BEDROOM UNIT W/ MEZZANINE & BALCONY**

- 2 BEDROOM UNIT W/ MEZZANINE & BALCONY
- 2 BEDROOM END UNIT W/ MEZZANINE & BALCONY

**2-BEDROOM UNIT W/ MEZZANINE**

- 2 BEDROOM UNIT W/ MEZZANINE
- 2 BEDROOM END UNIT W/ MEZZANINE

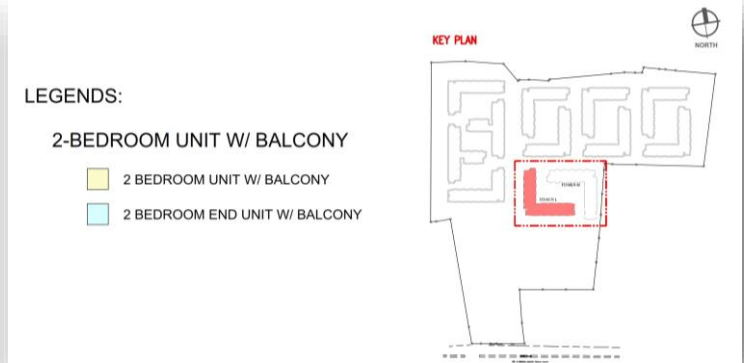
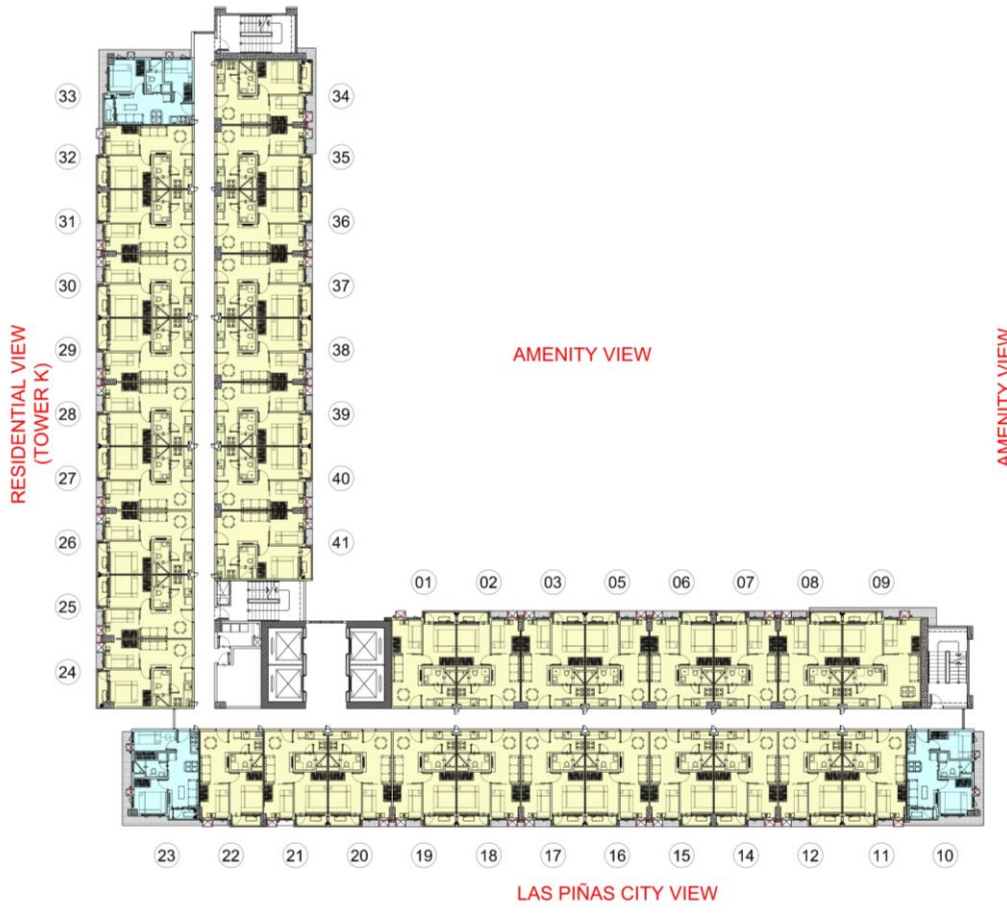
**KEY PLAN**



UNIT TYPE	NO. OF UNITS
2BR w/ MEZZANINE	11
2BR w/ MEZZANINE & BALCONY	8

# TYPICAL FLOOR PLAN

## TOWER L



UNIT TYPE	NO. OF UNITS
2 BR END UNIT WITH BALCONY	42
2 BR WITH BALCONY	504

# GROUND FLOOR PLAN

## TOWER M

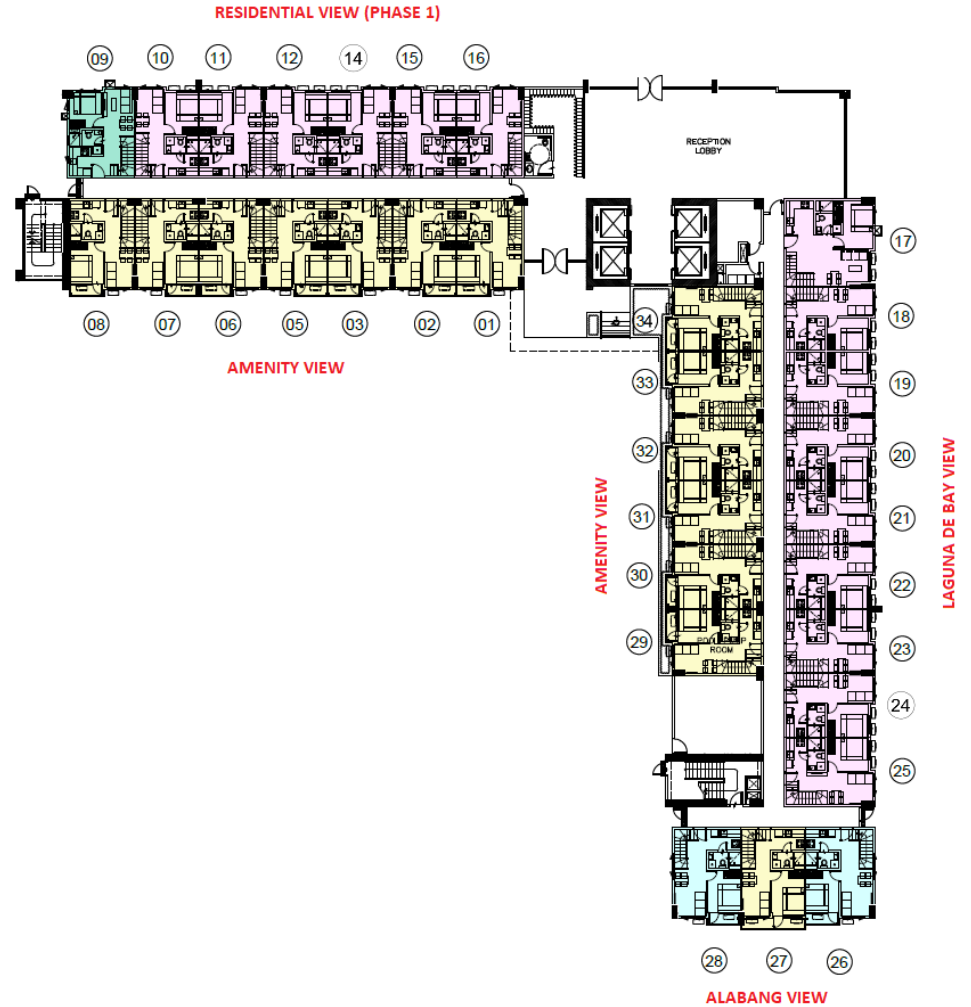
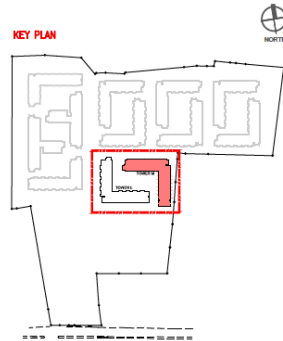
**LEGENDS:**

**2-BEDROOM UNIT W/ MEZZANINE & BALCON**

- 2 BEDROOM UNIT W/ MEZZANINE & BALCONY
- 2 BEDROOM END UNIT W/ MEZZANINE & BALCONY

**2-BEDROOM UNIT W/ MEZZANINE**

- 2 BEDROOM UNIT W/ MEZZANINE
- 2 BEDROOM END UNIT W/ MEZZANINE



UNIT TYPE	NO. OF UNITS
2BR END UNIT w/ MEZ & BALCONY	2
2BR END UNIT w/ MEZZANINE	1
2BR w/ MEZZANINE	15
2BR w/ MEZZANINE & BALCONY	14

# TYPICAL FLOOR PLAN

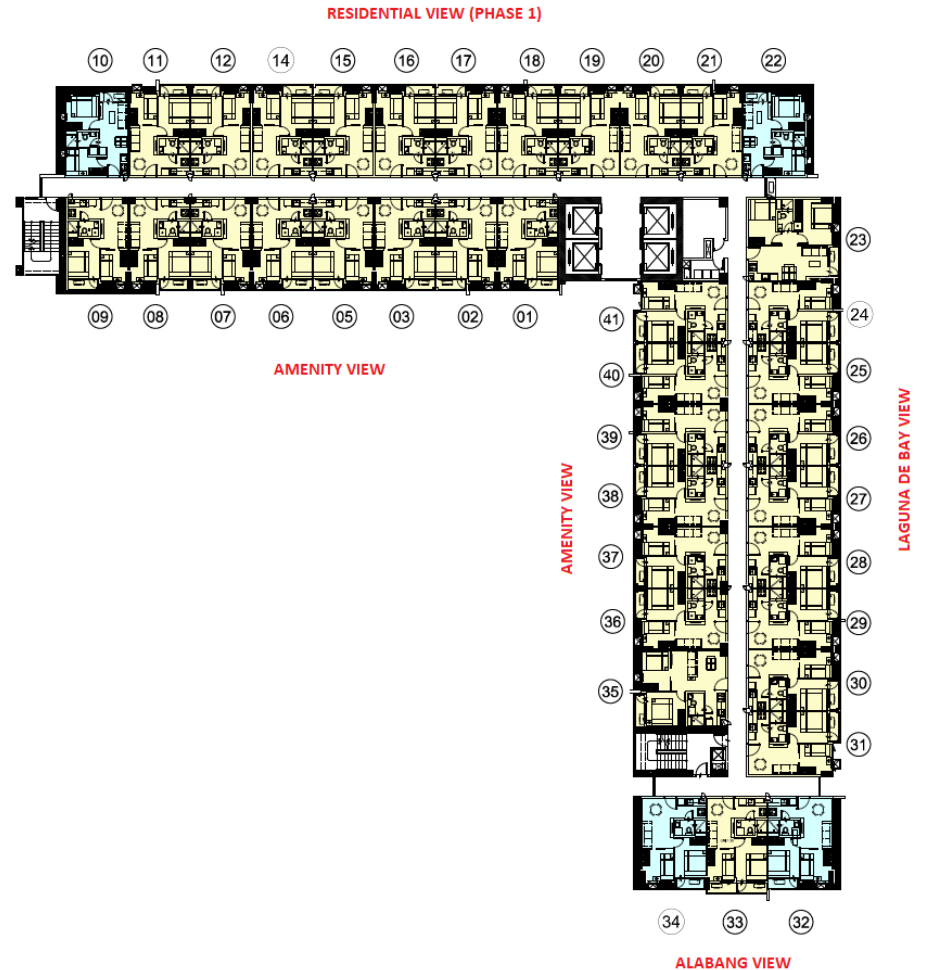
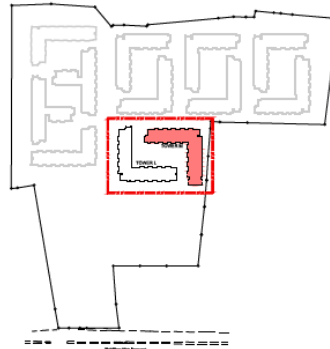
## TOWER M

**LEGENDS:**

**2-BEDROOM UNIT W/ BALCONY**

- 2 BEDROOM UNIT W/ BALCONY
- 2 BEDROOM END UNIT W/ BALCONY

KEY PLAN



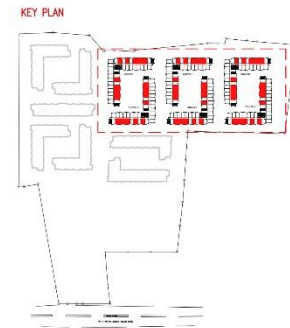
UNIT TYPE	NO. OF UNITS
2 BR END UNIT WITH BALCONY	42
2 BR WITH BALCONY	504

# TYPICAL UNIT



1 2-BEDROOM UNIT W/ BALCONY  
SCALE: NOT TO SCALE

Unit Area	31.96 sqm. – 34.10 sqm.
-----------	-------------------------

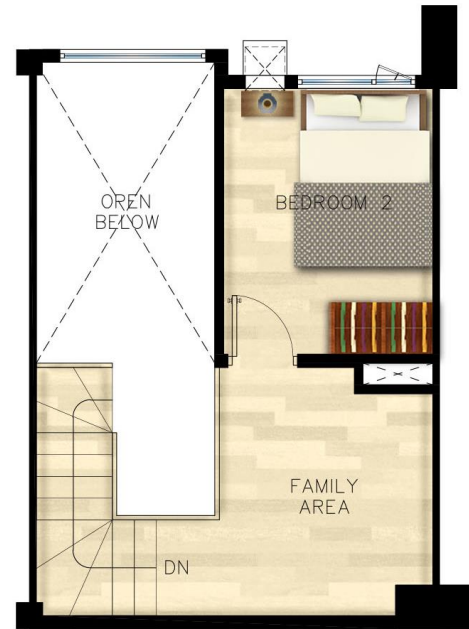




# TYPICAL UNIT



GROUND FLOOR PLAN



MEZZANINE FLOOR PLAN



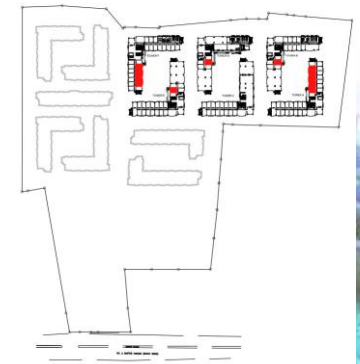
## 2-BEDROOM UNIT W/ MEZZANINE & BALCONY

SCALE:

NOT TO SCALE

<b>Unit Area</b>	<b>49.64 sqm. – 51.93 sqm.</b>
------------------	--------------------------------

KEY PLAN



# UNIT DELIVERABLES

WALL FINISH	
Painted Cement Finish	
FLOOR FINISH	
Floor Tiles	
DOORS	
Main Door	Laminated Wood Door
Bedroom	Laminated Wood Door
Toilet and Bath	Laminated Wood Door
BEDROOM PARTITION	
Dry Wall Partitions	
TOILET AND BATH	
Wall	Combination of ceramic tiles and painted finish
Floor	Ceramic Tiles
Ceiling	Painted Finish
Fixtures	Water closet, lavatory, soap holder, tissue holder and shower set
KITCHEN	
Kitchen countertop with under counter cabinet and kitchen sink	
BALCONY (IF APPLICABLE)	
Floor	Ceramic Tiles
Railing	Painted Metal Railing

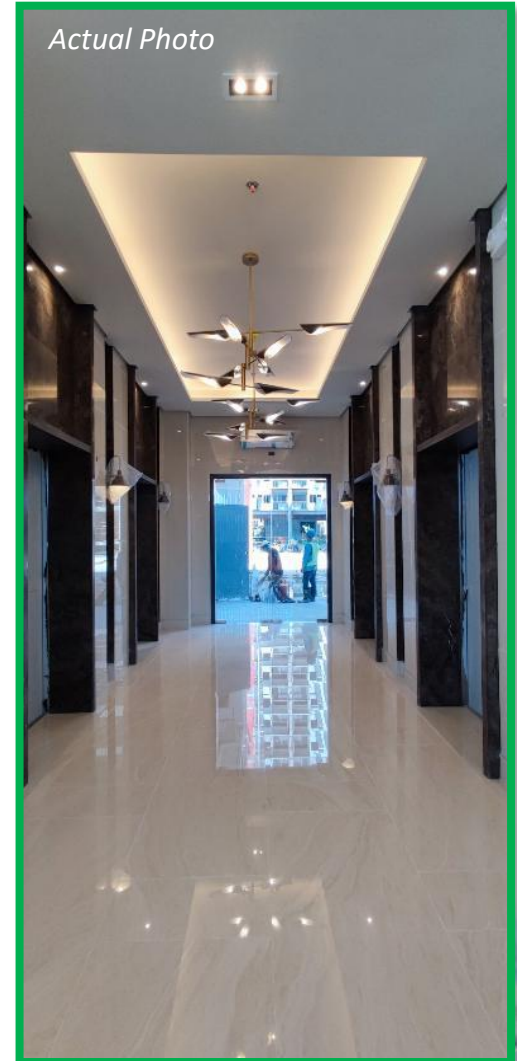
# CONSTRUCTION UPDATES – PH1



# CONSTRUCTION UPDATES – PH1



*Actual Photo*



*Actual Photo*

*Actual Photo*

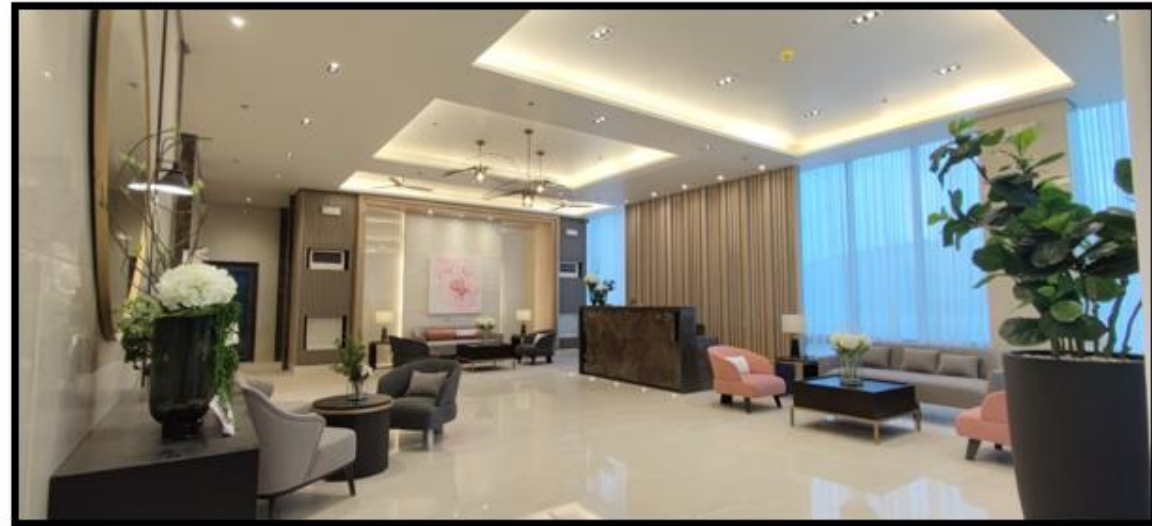
# CONSTRUCTION UPDATES – PH1



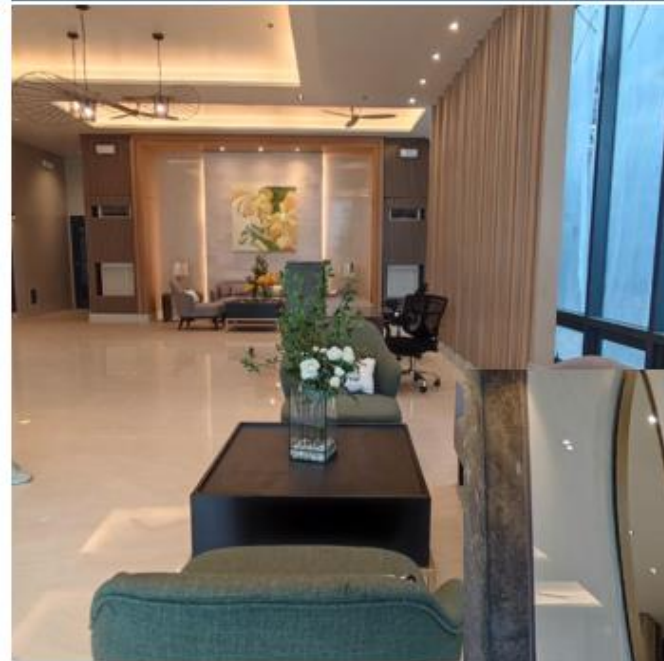
# CONSTRUCTION UPDATES – PH1



# CONSTRUCTION UPDATES – PH1



# CONSTRUCTION UPDATES – PH1





# CONSTRUCTION UPDATES – PH3



**FRONT ELEVATION**



**RIGHT ELEVATION**



**REAR ELEVATION**



**LEFT ELEVATION**

# IMMERSIVE EXPERIENCE

**bloom**  
RESIDENCES  
SUCAT, PARAÑAQUE



Everything you  
need to know  
about

**bloom**  
RESIDENCES  
SUCAT, PARAÑAQUE

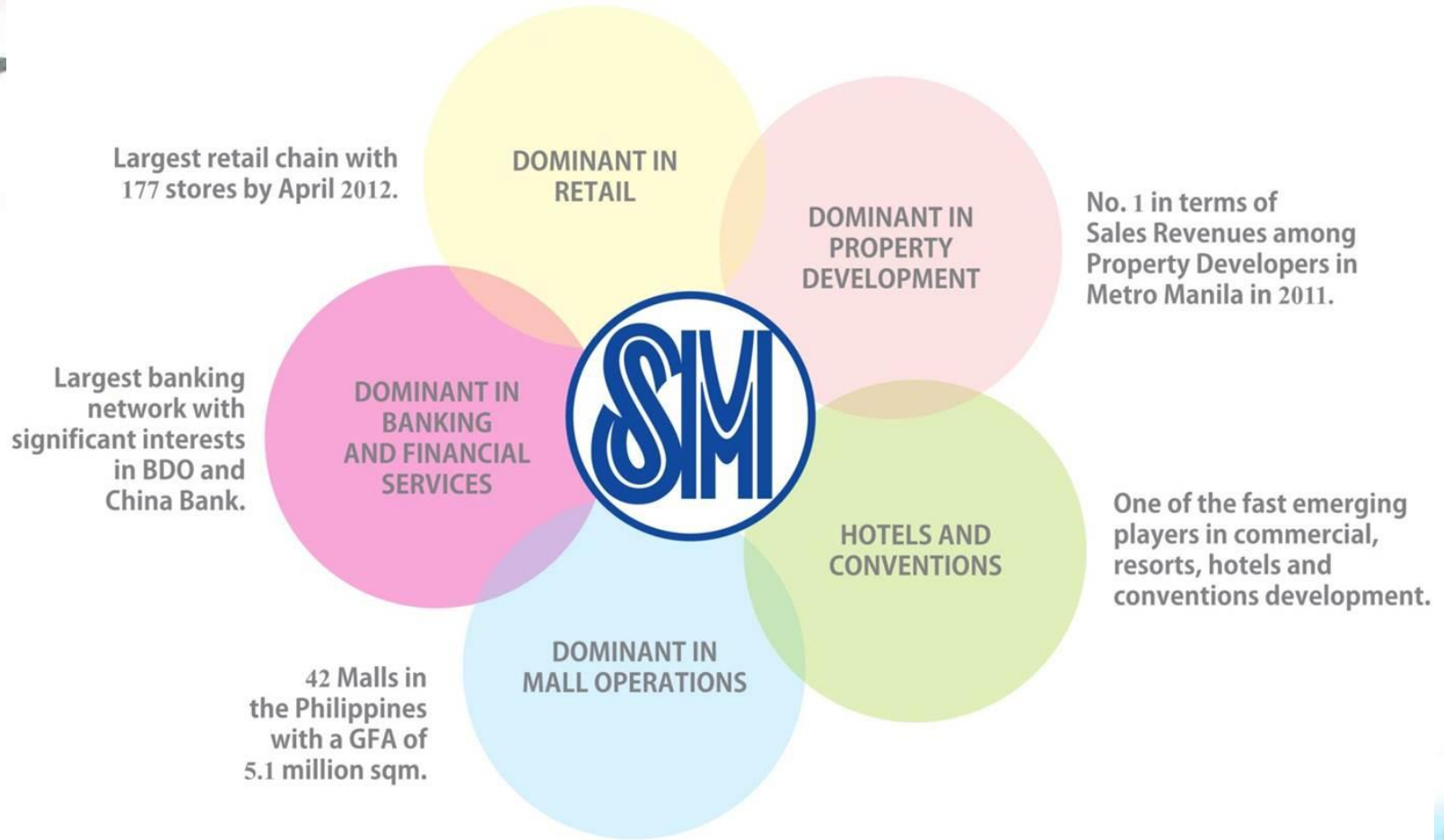
Right in your  
pocket!



**SMDC**

# REASONS TO INVEST

*Choose Bloom Residences!*



# REASONS TO INVEST

*Choose Bloom Residences!*

**B**

One of the Biggest SMDC's residential development in the South.

**L**

Location of the property is accessible to all modes of transportation. Location! Location! Location!

**O**

Ownership. Being proud of owning a home is one of the many reasons why people invest in real estate.

**O**

Opportunistic and valuable investment.

**M**

Multitude of recreational amenities, Bloom Residences offers an active lifestyle for the entire family all year round.

# FAQs – About the Building

## A. What establishments and landmarks are near Bloom Residences?

### *MALLS/SHOPPING CENTERS AND GROCERIES*

1. SM City BF Parañaque (1.4km)
2. Shopwise (1.0km)
3. Uniwid Warehouse (3.2km)
4. Puregold Sucat (5.3km)
5. SM Hypermarket (6.7km)
6. SM City Sucat (6.8km)
7. Santana Grove (1.0km)

### *EDUCATIONAL INSTITUTIONS*

1. Apec Schools – Sta. Rita (1.1km)
2. John Shannon Montessori (3.4km)
3. Sampaloc Site II Elementary School (2.6km)
4. LH Montessori High Inc. School (2.3km)
5. International Christian Academy (1.7km)
6. Ville St. John Academy (3.3km)
7. Escuela de San Lorenzo Ruiz (4.2km)
8. Regina Maria Montessori (1.7km)
9. Datamex Institute of Computer Technology (3.4km)
10. St. Therese De Avila School of Parañaque or STAS (4.2km)
11. PATTS College of Aeronotics (4.9km)
12. Universal College of Parañaque (5.1km)
13. STI College of Parañaque (5.4km)
14. Parañaque National High School (5.7km)
15. Olivarez College (6.2km)
16. Maria Pia Notari School Incorporated (7.7km)

### *HEALTH INSTITUTIONS*

1. Medical Center Parañaque (1.2km)
2. Unihealth- Parañaque Hospital and Medical Center (3.3km)
3. Hi – Precision Medical Clinic (3.0km)
4. Olivarez Hospital (5.8km)
5. The Premier Medical Center (8.2km)

### *PLACES OF WORSHIP*

1. San Antonio de Padua Parish Church (1.7km)
2. Iglesia ni Kristo – Parañaque (2.4km)
3. Mary Queen of Apostles (5.1km)
4. Our Lady of the Most Holy Rosary Parish – Parañaque (6.2km)
5. Local Superior of the Crucified Sisters Adorers of the Eucharist Incorporated (6.5km)
6. Golden Harvest Christian Mission International Inc. (7.2km)
7. El Shaddai Shrine (8.1km)

### *GOVERNMENT OFFICES*

1. Bureau of Internal Revenue District Office - (14.6km)
2. Parañaque City Police Station – (6.9km)

# FAQs – About the Building

- A. What are the amenities per phase?
  - a) Phase 1 - Adult and Kiddie Pool, Multi-purpose Function Rooms, Basketball Court, Jogging Path, Landscaped Areas
- B. What will be located at the Ground Floor?
  - a) Phase 1 - Residential Units, Main Lobby, Multi-purpose Rooms
- C. What is the back-up power?
  - a) Generator
- D. What will be the ventilation on the typical residential floors?
  - a) Naturally Ventilated
- E. What are the corridor measurements?

## Corridor

Hallway Width	+1.5 meters
Hallway Floor to Ceiling Height	±2.4 meters

- F. How elevators are there?

Phase 1	4 elevators per tower
---------	-----------------------

# FAQs – About the Unit

A. What is the floor to floor and floor to ceiling height?

Unit	
Residential Floor to Ceiling Height	+2.35 to 2.4 meters
Residential Floor to Floor Height	+2.95 to 3.1 meters

B. What are the unit measurements?

Unit	
Balcony Railing Height	+1.2 meters
Partition Wall Height	+2.4 meters

C. What is the allowable AC Capacity

- a) 2 Bedroom With balcony
  - i. Split Type ACU – 1-1.5 HP and
  - ii. Window Type ACU – 1-1.5 HP

# FAQs – Additional FAQs

- A. Elevator Capacity – *21 pax per elevator cart*
- B. No. of Elevators per building – *4 elevators per building*
- C. Where is the garbage collection area – *garbage room per building located at the back portion of the elevator lobbies*
- D. Percentage of Open Space – *59.3%*
- E. For emergency back-up power, does it activate automatically or is there an on switch for it – *for units, with switch; for common areas, automatic*
- F. Parking measurement and parking ratio – *12.5 sqm. parking area; 1:4 parking ratio*
- G. Material recovery facility placement – is it per building? Or per project? And where is it placed in the SDP? – *basement level*
- H. Entry and exit points in SDP – *already reflected on SDP in Slide 8*
- I. Access road measurement – *6.5 meters*
- J. Function room capacity - *+/- 40 pax*
- K. For Phase/internet provision – fiber optic ready? - *yes*
- L. Fire exit for projects outside Manila – is it “open”? (or naturally ventilated) – *N/A*
- M. Type of foundation per project (is it mat, bored piled, etc.) – *Mat and Isolated Footings*
- N. For proximity measures, please keep it at km (for nearby selling points) as per HLURB guidelines
  - A. *SM City BF Parañaque (1.4km)*
  - B. *Medical Center Parañaque (1.2km)*
  - C. *NAIA (7.2km via NAIAX)*
- O. Building or development elevation from street level – *same level as Dr.A Santos*
- P. Include disclaimers for photos used since not all have disclaimers in presentation (is it actual photo or architect’s perspective) – *disclaimers updated*
- Q. Please verify with Marketing is are we still okay to used “SMDC leasing” or edit it to “Prime Key leasing” for our projects – *Use Prime Key as verified with Marketing*
- R. Project Design/Concept (is it modern contemporary? etc.) – *Modern Contemporary*





Thank You!





Thank You

For Project Inquiries,

**EMANUEL N. NAVE**

Asst. Project Director

email: [emanuel.nave@smdevelopment.com](mailto:emanuel.nave@smdevelopment.com)

phone: Loc. 2472

