

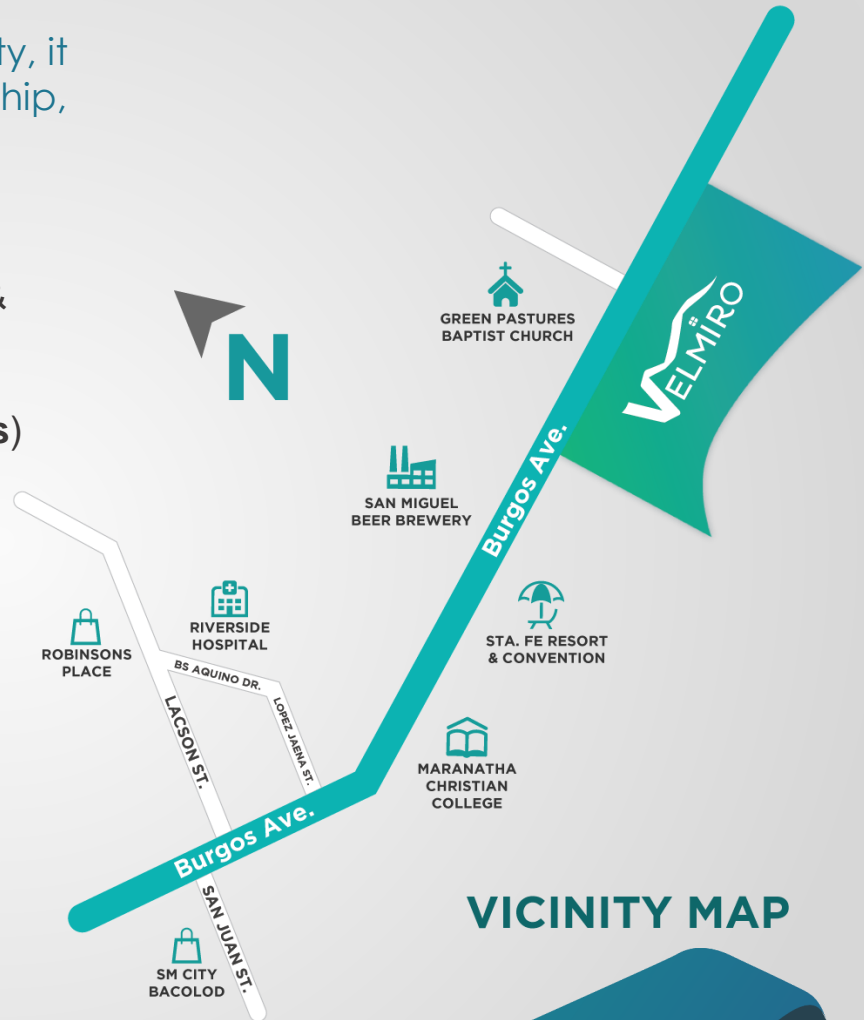


VELMIRO  
PLAINS BACOLOD

# LOCATION

Located at Burgos Avenue, Granada, Bacolod City, it is accessible to hospitals, schools, places of worship, malls, and other major establishments

- 450m from Green Pastures Baptist School (1min)
- 1.4km from Sta. Fe Resort & Convention Center & San Miguel Bacolod Brewery (2mins)
- 2.1km from **Maranatha Christian College (3mins)**
- 3.5KM **Metro Bacolod Hospital (5mins)**
- 4.6KM **SaveMore FortuneTown (5mins)**
- 6KM **New Government Center (10mins)**
- 5.5KM **Lopue's East, SaveMore (8Mins)**
- 8.0km from **Riverside Hospital (18mins)**
- 8.6km from **SM City Bacolod (20mins)**
- 8.9km from **Robinson's Place (20mins)**
- 9.7km from Cebu Landmasters Bacolod Sales Office (24mins)
- 10.1km from MesaVirre Garden Residences (24mins)



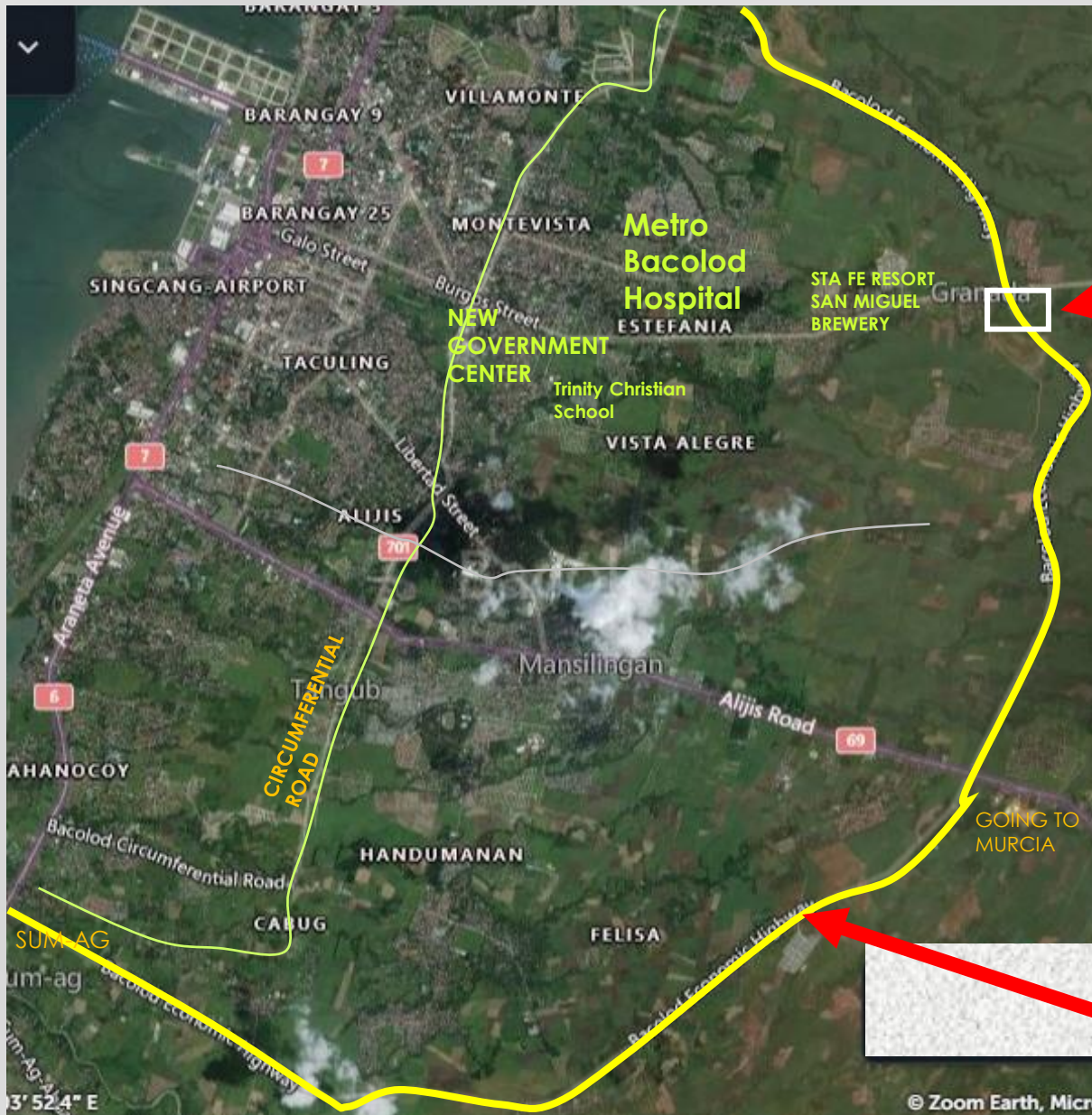
VICINITY MAP

# SITE DEVELOPMENT PLAN

- 8.12-hectare modern residential community set on the City of Smiles with house and lot units efficiently designed to maximize space and optimize breathtaking views
- Velmiro Plains will have 342 House & Lot units on lots ranging from 100-150 sqm







**THE  
SITE**

**Ongoing Economic Highway  
FROM SUM-AG TO  
VICTORIAS**

# HOUSE MODELS

## SOLAS



### GROUND FLOOR



### SECOND FLOOR



4 Bedrooms, Balcony, 3 Toilet & Bath,  
Carport

TYPICAL FLOOR AREA : 120 sqm

TYPICAL LOT AREA : 150 sqm



# HOUSE MODELS

## ANANDI



GROUND FLOOR



SECOND FLOOR



4 Bedrooms, Balcony, 3 Toilet & Bath,  
Carport

TYPICAL FLOOR AREA : 88 sqm

TYPICAL LOT AREA : 120 sqm

# HOUSE MODELS

## ASHA



GROUND FLOOR



SECOND FLOOR



4 Bedrooms, Balcony, 2 Toilet & Bath,  
Carport

TYPICAL FLOOR AREA : 79 sqm

TYPICAL LOT AREA : 100 sqm



# HOUSE MODELS

## FELICITY



GROUND FLOOR



SECOND FLOOR



3 Bedrooms, Balconette, 2 Toilet & Bath,  
Carport

TYPICAL FLOOR AREA : 60 sqm

TYPICAL LOT AREA : 100 sqm



# HOUSE MODELS

## DARA



### GROUND FLOOR



3 Bedrooms, Carport, 1 Toilet & Bath

TYPICAL FLOOR AREA : 53 sqm

TYPICAL LOT AREA : 120 sqm

# HOUSE MODELS

## ZURI



GROUND FLOOR



SECOND FLOOR



2 Bedrooms, Balconette, 2 Toilet & Bath,  
Carport

TYPICAL FLOOR AREA : 48 sqm

TYPICAL LOT AREA : 100 sqm



# HOUSE FEATURES

AREA	Typical Finish
Living, Dining, Kitchen, Bedroom	60X60 Ceramic Floor Tiles
Toilet & Bath	FLOOR – 30X30 Ceramic Floor Tiles WALL – 30X30 Ceramic Floor Tiles
Doors	Main Door – Solid Panel Door Bedroom – Flush Door
Windows	6mm Clear Glass Window on Aluminium Frames
Bathroom Features	Included
Kitchen Cabinet	Base Kitchen Cabinet with Granite Countertop
Interior Wall Finish	Painted Finish
Exterior Wall Finish	Wall Accents, Painted Concrete Walls & other Façade Accessories
Roof	Pre-Painted Long Span

## DISCLAIMER

This is for information purposes only and does not constitute an invitation, offer or solicitation to acquire or purchase units in a residential or commercial real estate project. This developer reserves the right to change any detail herein without prior notice.

# COMMUNITY AMENITIES

- Gate & Guardhouse
- Landscaped Parks
- Multi-level Clubhouse
- Adult Pool and Kiddie pool
- Basketball Court
- Chapel
- Elevated Water Tank
- Materials Recovery Facility (MRF)
- Function Rooms
- Fitness Gym
- Kids Playground
- Meeting Room
- Perimeter Fencing
- Detention Pond
- Retail Block
- Services of a Property Management Team







# GATE & GUARDHOUSE ARCHITECT'S PERSPECTIVE





**GATE & GUARDHOUSE**  
ARCHITECT'S PERSPECTIVE





**FITNESS GYM**

ARCHITECT'S PERSPECTIVE



# CHAPEL

ARCHITECT'S PERSPECTIVE





# BASKETBALL COURT

ARCHITECT'S PERSPECTIVE





**CLUB MIRA**  
ARCHITECT'S  
PERSPECTIVE



**CLUB MIRA**  
ARCHITECT'S  
PERSPECTIVE



**TURNOVER 4<sup>TH</sup> QUARTER 2022**  
**LTS NUMBER 033558**





We Build with You in Mind

**WINNER**  
**BEST DEVELOPER**  
**IN THE PHILIPPINES**

